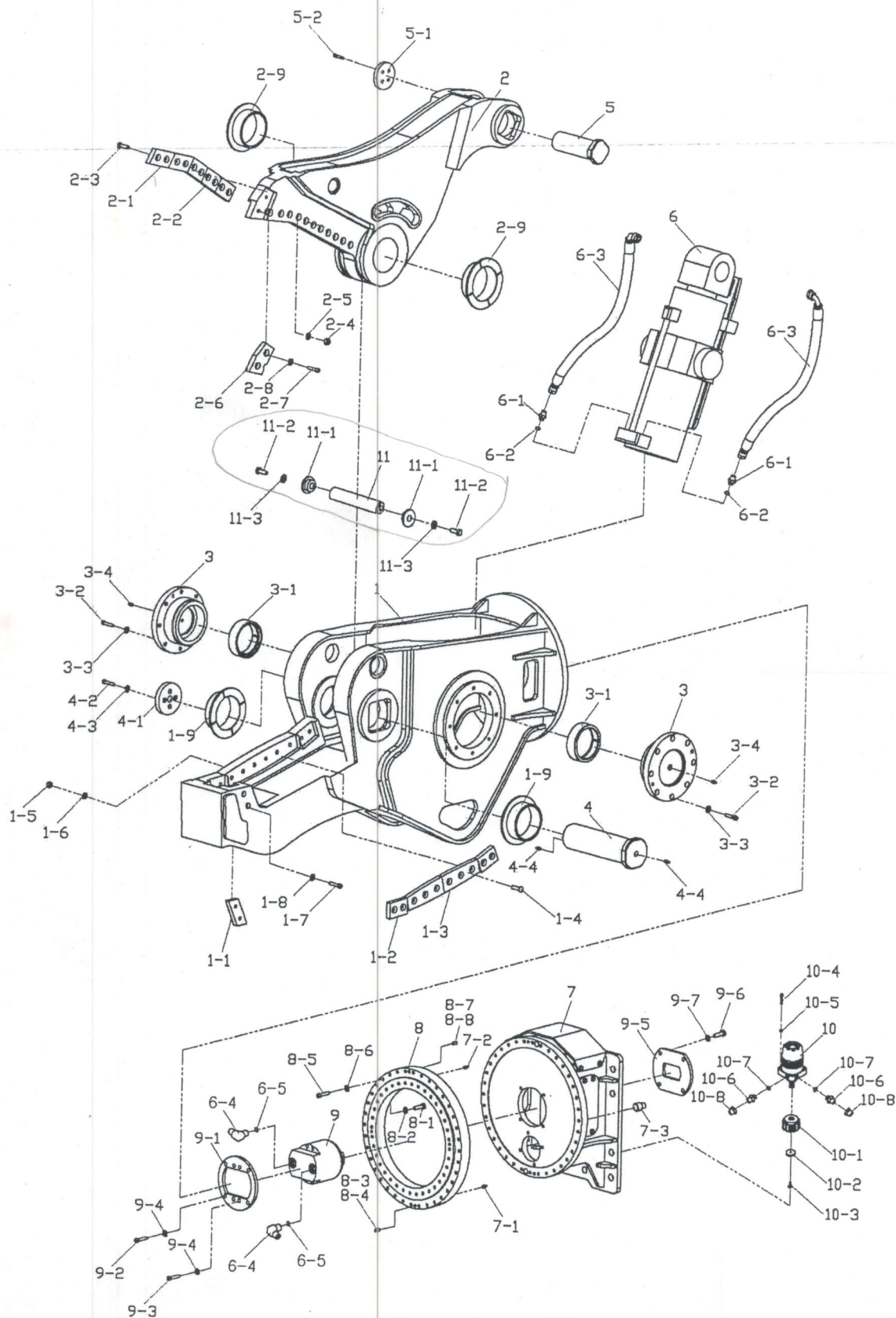


1-1. Exploded view of URS 350



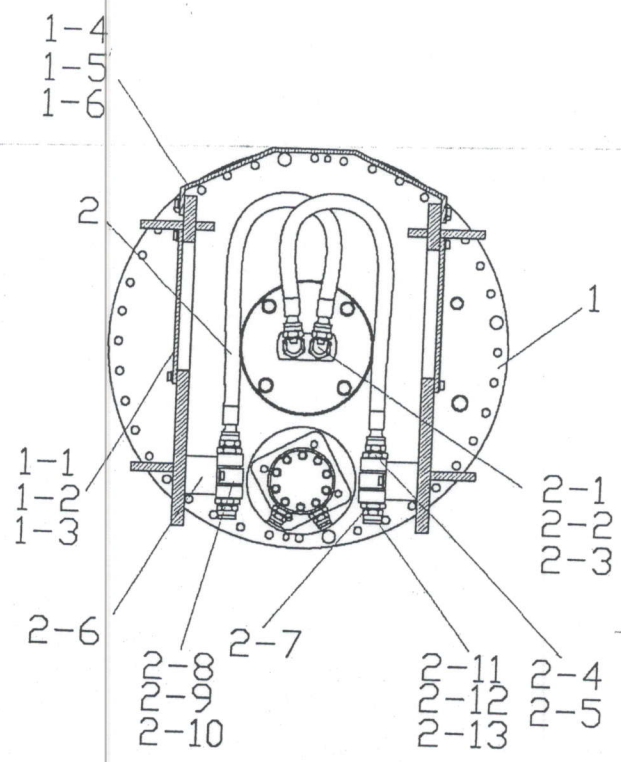
1-2. Part list of URS350

No.	Part Name	Part No.	Q'TY	Remarks
1	BODY		1	
1-1	GUID BLADE		1	DHMS400-G1
1-2	CUTTER BLADE		2	25Tx120L
1-3	CUTTER BLADE		2	25TxR250L
1-4	BOLT DISH HEAD - KEY TYPE (12.9)		10	M16x80
1-5	NUT PREVAILING LOCK		10	M16
1-6	WASHER RIBBED LOCK		10	M16
1-7	BOLT DISH HEAD (12.9)		2	M16x70
1-8	WASHER LOCK-RIBBED		2	M16
1-9	BUSH, BODY UNIT		2	
2	ARM		1	
2-1	CUTTER BLADE		2	25Tx120
2-2	CUTTER BLADE		4	25Tx120
2-3	BOLT DISH HEAD - KEY TYPE (12.9)		12	M16x80
2-4	NUT PREVAILING LOCK		12	M16
2-5	WASHER RIBBED LOCK		12	M16
2-6	GUID BLADE		1	DHMS400-G2
2-7	GUID BLADE		1	DHMS400-G1
2-9	BUSH, ARM UNIT		2	
3	TRUNNION COVER		2	
3-1	BUSH TRUNNION		2	
3-2	BOLT SOCKET(12.9)		16	M20x50
3-3	WASHER LOCK-RIBBED		16	M20
3-4	GREASE NIPPLE		2	PT 1/4"
4	FRAME PIN		1	
4-1	F/PIN END PLATE		1	
4-2	BOLT SOCKET(12.9)		4	M20x40
4-3	WASHER LOCK-RIBBED		4	M20
4-4	GREASE NIPPLE		2	PT 1/4"
5	CYLNDER PIN		1	
5-1	C/PIN END PLATE		1	
5-2	BOLT SOCKET(12.9)		4	M16x30
6	HYD. CYLINDER ASSY		1	
6-1	CONNECTOR (O-RING SEAL TYPE)		2	PF1"x PF1" 5#

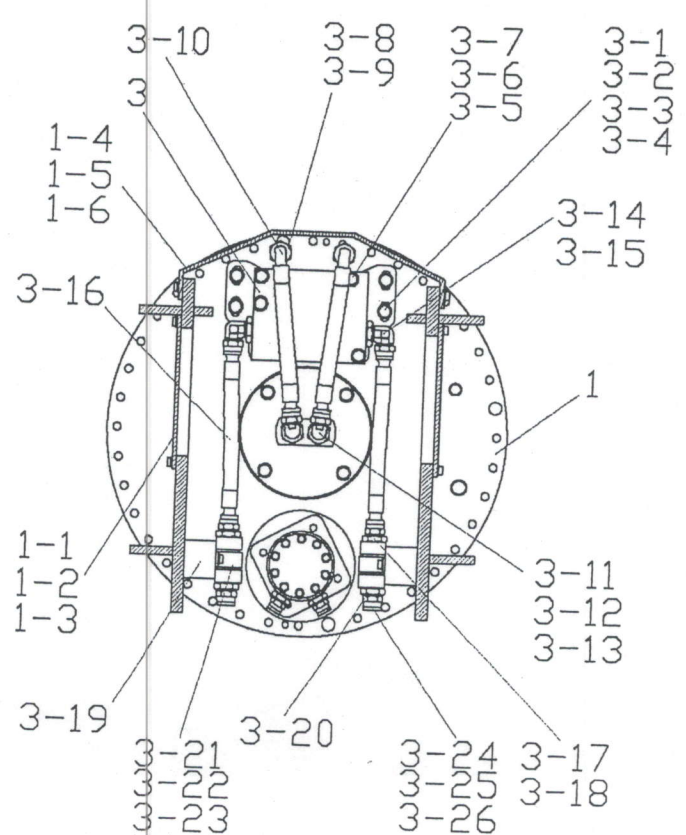
No.	Part Name	Part No.	Q'TY	Remarks
6-2	O-RING(NOK)		2	1BP 29
6-3	HOSE ASS'Y(5#x905#)		2	1"x 4S x 1300
6-4	90° ELBOW (O-RING SEAL TYPE)		2	PF1"x PF1" 5#
6-5	O-RING(NOK)		2	1BP 29
7	BULK CAP PLATE TYPE		1	
7-1, 2	GREASE NIPPLE		2	PT 1/8"
7-3	PLUG		1	PT 1-1/4"
8	SLEWING GEAR		1	
8-1	BOLT HEX (10.9T)		47	M16x100
8-2	WASHER RIBBED LOCK		47	M16
8-3	DOWEL PIN(TAPPED)		2	13x40(M8x1.25)
8-4	BOLT SOCKET(12.9)		2	M8x10
8-5	BOLT SOCKET(12.9)		46	M16x110
8-6	WASHER SPRING		46	M16
8-7	DOWEL PIN(TAPPED)		2	13x40(M8x1.25)
8-8	BOLT SOCKET(12.9)		2	M8x10
9	CENTER JOINT		1	
9-1	CENTER JOINT PLATE-A		1	
9-2	BOLT SOCKET(12.9)		4	M16x45
9-3	BOLT SOCKET(12.9)		4	M16x40
9-4	WASHER RIBBED LOCK		8	M16
9-5	CENTER JOINT PLATE-B		1	
9-6	BOLT HEX (10.9T)		4	M16x45
9-7	WASHER RIBBED LOCK		4	M16
10	HYD. MOTOR		1	
10-1	PINION GEAR		1	
10-2	STOP PLATE(P/GEAR)		1	
10-3	Socket Flat Head Bolt(10.9)		1	UNF 1/2"
10-4	BOLT HEX (10.9T)		4	M16x45
10-5	WASHER NORD LOCK		4	M16
10-6	CONNECTOR (METAR SEAL)		2	PF3/4"x UNF7/8" 4#
10-7	WASHER COPPER		2	PF3/4
10-8	UNION CAP		2	UNF7/8"4#
11	SHAFT PIN		1	
✓ 11-1	SHAFT BUSH		2	
✓ 11-2	BOLT HEX (10.9T)		2	M30

√ 11-3	WASHER SPRING	
		2 M30x130xP2

2-1. View of plate bulk assembly (Standard)



2-2. View of plate bulk cap assembly (Speed-up valve)



2-3. Part list of plate bulk cap assembly (Standard)

No.	Part Name	Part No.	Q'TY	Remarks
1	PLATE TYPE BULK CAP		1	
1-1	BULK CAP COVER		2	
1-2	BOLT HEX(10.9)		8	M12x30
1-3	WASHER SPRING H/T		8	M12
1-4	S/U COVER		1	
1-5	BOLT HEX(10.9)		4	M12x30
1-6	WASHER SPRING H/T		4	M12
2	HOSE ASSY(5#*905#)		2	1"x4Sx1150
2-2	CONNECTOR(LONG O-RING SEAL TYPE)		2	PF1" x PF1" 5#
2-3	O-RING(NOK)		2	1BP 29
2-4	CONNECTOR(O-RING SEAL TYPE)		2	PF 1" x PF 1"5#
2-5	O-RING (NOK)		2	1BP 29
2-6	PLATE		2	
2-7	HOSE JOINT		2	
2-8	CLAMP		2	
2-9	BOLT SOCKET(12.9)		4	M12 x 30
2-10	WASHER SPRING H/T		4	M12
2-11	CONNECTOR(O-RING SEAL TYPE)		2	PF1" x UNF1-5/16" 4#
2-12	O-RING(NOK)		2	1BP 29
2-13	UNION CAP		2	UNF1- 5/16" 4#

2-4. Part list of plate bulk cap assembly (Speed-up valve)

No.	Part Name	Part No.	Q'TY	Remarks
1	PLATE TYPE BULK CAP		1	
1-1	BULK CAP COVER		2	
1-2	BOLT HEX(10.9)		8	M12x30
1-3	WASHER SPRING H/T		8	M12
1-4	S/U COVER		1	
1-5	BOLT HEX(10.9)		4	M12x30
1-6	WASHER SPRING H/T		4	M12
3	SPEED-UP V/V		1	
3-1	PLATE SPEED-UP V/V		2	
3-2	B.K.T SPEED-UP V/V		1	
3-3	BOLT HEX(10.9)		4	M16*35
3-4	WASHER SPRING H/T		4	M16
3-5	BOLT HEX(10.9)		3	M16*140
3-6	WASHER LOCK-RIBBED		3	M16
3-7	NUT PREVAILING LOCK		3	M16
3-8	90° ELBOW (O-RING SEAL TYPE)		2	PF1"x PF1" 5#
3-9	O-RING (NOK)		2	1BP 29
3-10	HOSE ASSY(5#*905#)		2	1"x4Sx345
3-11	90° ELBOW (S/W TYPE)		2	PF1"x PF1" 5#
3-12	CONNECTOR(LONG O-RING SEAL TYPE)		2	PF1"x PF1" 5#
3-13	O-RING(NOK)		2	1BP 29
3-14	90° ELBOW (O-RING SEAL TYPE)		2	PF1"x PF1" 5#
3-15	O-RING (NOK)		2	1BP 29
3-16	HOSE ASSY(5#*5#)		2	1"x4Sx410
3-17	CONNECTOR(O-RING SEAL TYPE)		2	PF 1" x PF 1"5#
3-18	O-RING (NOK)		2	1BP 29
3-19	PLATE		2	
3-20	HOSE JOINT		2	
3-21	CLAMP		2	
3-22	BOLT SOCKET(12.9)		4	M12x30
3-23	WASHER SPRING H/T		4	M12
3-24	CONNECTOR(O-RING SEAL TYPE)		2	PF1" x UNF1-5/16"4#
3-25	O-RING(NOK)		2	1BP 29
3-26	UNION CAP		2	UNF 1-5/16" 4#