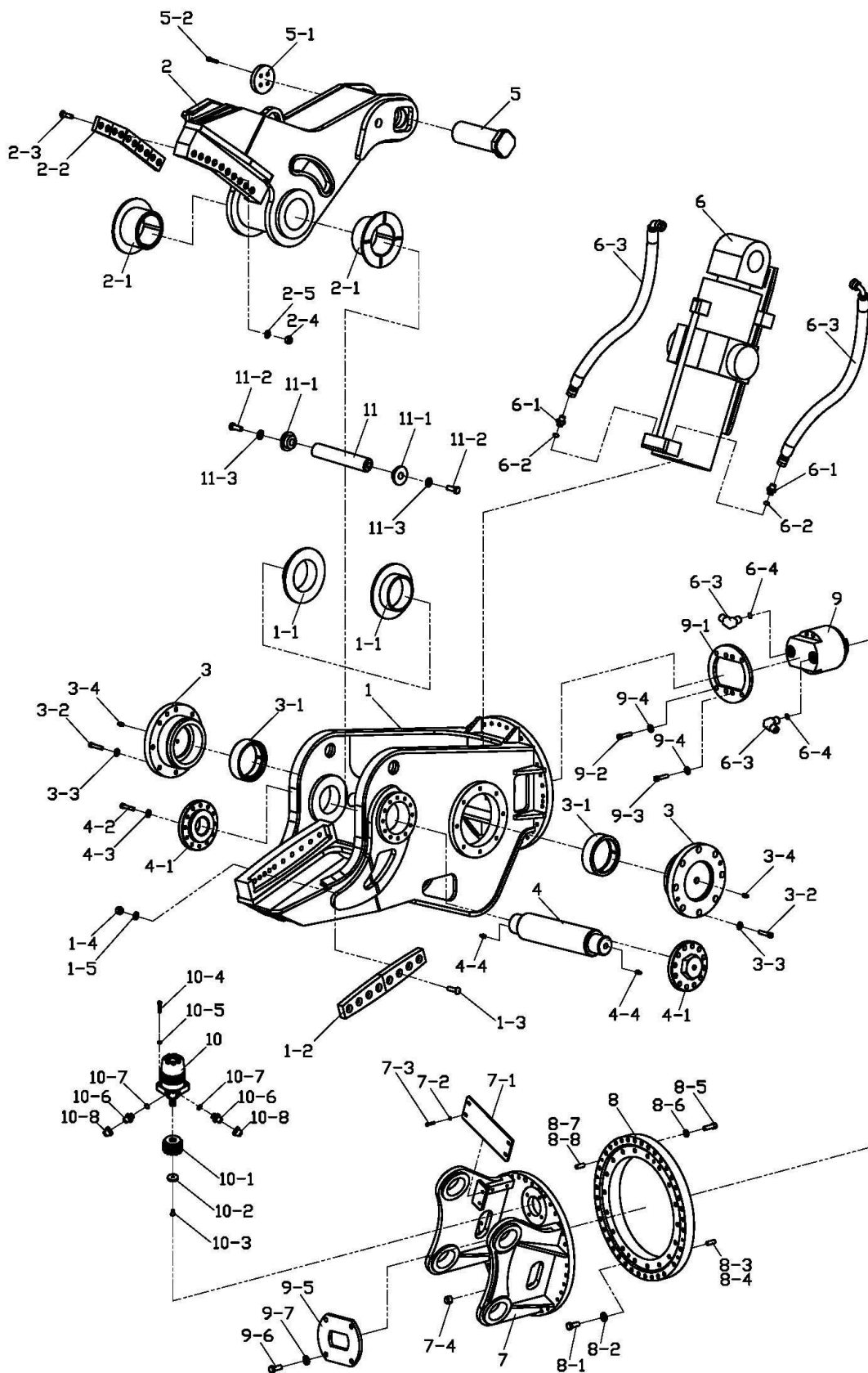


1-1. Exploded view of URS301

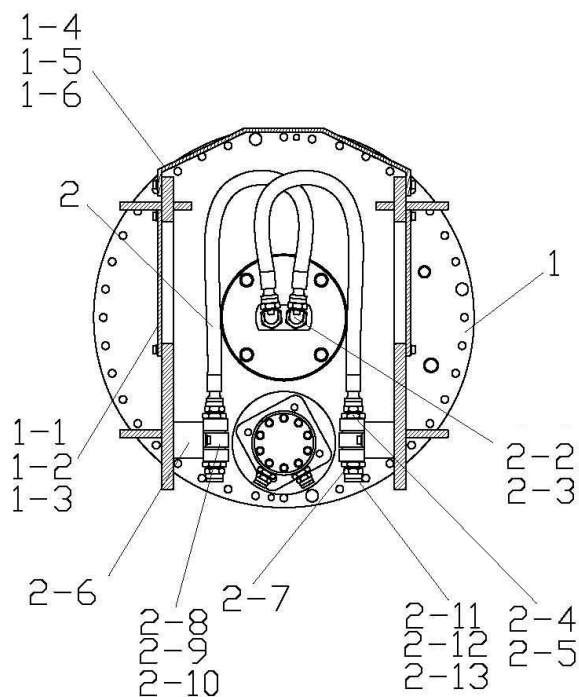


## 1-2. Part list of main body assembly

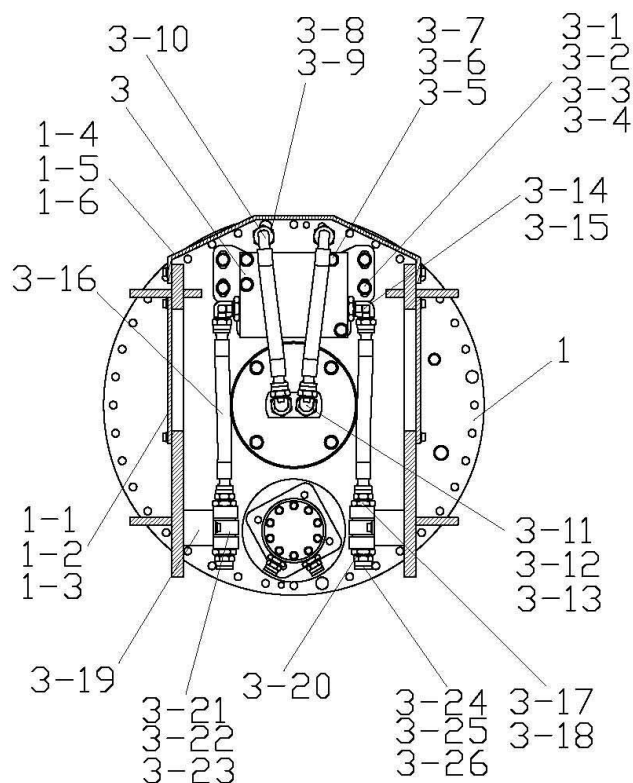
No.	Part Name	Part No.	Q'TY	Remarks
1	BODY		1	
1-1	BUSH, BODY UNIT		2	
1-2	CUTTER BLADE		2	30T x 300L
1-3	BOLT DISH HEAD (12.9)		6	M16 x 60
1-4	NUT PREVAILING LOCK		6	M16
1-5	WASHER RIBBED LOCK		6	M16
2	ARM		1	
2-1	BUSH, ARM UNIT		2	
2-2	CUTTER BLADE		5	25T x 80 x 120L
2-3	BOLT DISH HEAD (12.9)		10	M16 x 60
2-4	NUT PREVAILING LOCK		10	M16
2-5	WASHER RIBBED LOCK		10	M16
3	TRUNNION COVER		2	
3-1	BUSH TRUNNION		2	
3-2	BOLT SOCKET(12.9)		16	M16 x 50
3-3	WASHER LOCK-RIBBED		16	M16
3-4	GREASE NIPPLE		2	PT 1/4"
4	FRAME PIN		1	
4-1	F/PIN END COVER		2	
4-2	BOLT SOCKET(12.9)		24	M20x40
4-3	WASHER LOCK-RIBBED		24	M20
4-4	GREASE NIPPLE		2	PT 1/4"
5	CYLNDER PIN		1	
5-1	C/PIN END PLATE		1	
5-2	BOLT SOCKET(12.9)		4	M12 x 30
6	HYD. CYLINDER ASSY		1	
6-1	CONNECTOR (O-RING SEAL TYPE)		2	PF1" x PF1" 5#
6-2	O-RING(NOK)		2	1BP 29
6-3	HOSE ASS'Y(5#x905#)		2	1" x 4S x 1200
6-4	90° ELBOW (O-RING SEAL TYPE)		2	PF1" x PF1" 5#
6-5	O-RING(NOK)		2	1BP 29
7	BULK CAP PLATE TYPE		1	
7-1	MOTOR COVER		1	

No.	Part Name	Part No.	Q'TY	Remarks
7-2	BOLT HEX(10.9)		4	M12 x 50
7-3	WASHER SPRING		4	M12
7-4	BOLT SOCKET(12.9)		4	M16 x 40
8	SLEWING GEAR		1	SISI 590
8-1	BOLT HEX (10.9T)		40	M16 x 100
8-2	WASHER RIBBED LOCK		40	M16
8-3	DOWEL PIN(TAPPED)		2	13 x 40 (M8 x 1.25)
8-4	BOLT SOCKET(12.9)		2	M8 x 10
8-5	BOLT SOCKET(12.9)		37	M16 x 100
8-6	WASHER SPRING		37	M16
8-7	DOWEL PIN(TAPPED)		2	13 x 40 (M8 x 1.25)
8-8	BOLT SOCKET(12.9)		2	M8 x 10
9	CENTER JOINT		1	
9-1	CENTER JOINT PLATE-A		1	
9-2	BOLT SOCKET(12.9)		4	M16 x 45
9-3	BOLT SOCKET(12.9)		4	M16 x 40
9-4	WASHER RIBBED LOCK		8	M16
9-5	CENTER JOINT PLATE-B		1	
9-6	BOLT HEX (10.9T)		4	M16 x 45
9-7	WASHER RIBBED LOCK		4	M16
10	HYD. MOTOR		1	WHITE (DT3307)
10-1	PINION GEAR		1	
10-2	STOP PLATE(P/GEAR)		1	
10-3	Socket Flat Head Bolt(10.9)		1	1/2" x UNF1/2
10-4	BOLT HEX (10.9T)		4	M16 x 45
10-5	WASHER NORD LOCK		4	M16
10-6	CONNECTOR (METAR SEAL)		2	PF3/4" x UNF7/8" 4#
10-7	WASHER COPPER		2	PF3/4
10-8	UNION CAP		2	UNF7/8" 4#
11	SHAFT PIN		1	
11-1	SHAFT BUSH		2	
11-2	BOLT HEX (10.9T)		2	M30 x 130 x P2
11-3	WASHER SPRING		2	M30

2-1. View of plate bulk assembly (Standard)



2-2. View of plate bulk cap assembly (Speed-up valve)



## 2-3. Part list of plate bulk cap assembly (Standard)

No.	Part Name	Part No.	Q'TY	Remarks
1	PLATE TYPE BULK CAP		1	
1-1	BULK CAP COVER		2	
1-2	BOLT HEX(10.9)		8	M12 x 30
1-3	WASHER SPRING H/T		8	M12
1-4	S/U COVER		1	
1-5	BOLT HEX(10.9)		4	M12 x 30
1-6	WASHER SPRING H/T		4	M12
2	HOSE ASSY(5# x 90 5#)		2	1"x4Sx1150
2-2	CONNECTOR(O-RING SEAL TYPE)		2	PF1" x PF1" 5#
2-3	O-RING(NOK)		2	1BP 29
2-4	CONNECTOR(O-RING SEAL TYPE)		2	PF 1" x PF 1"5#
2-5	O-RING (NOK)		2	1BP 29
2-6	PLATE		2	
2-7	HOSE JOINT		2	
2-8	CLAMP		2	
2-9	BOLT SOCKET(12.9)		4	M12 x 30
2-10	WASHER SPRING H/T		4	M12
2-11	CONNECTOR(O-RING SEAL TYPE)		2	PF1" x UNF1-5/16"4#
2-12	O-RING(NOK)		2	1BP 29
2-13	UNION CAP		2	UNF1- 5/16" 4#

## 2-4. Part list of plate bulk cap assembly (Speed-up valve)

No.	Part Name	Part No.	Q'TY	Remarks
1	PLATE TYPE BULK CAP		1	
1-1	BULK CAP COVER		2	
1-2	BOLT HEX(10.9)		8	M12 x 30
1-3	WASHER SPRING H/T		8	M12
1-4	S/U COVER		1	
1-5	BOLT HEX(10.9)		4	M12 x 30
1-6	WASHER SPRING H/T		4	M12
3	SPEED-UP V/V		1	
3-1	PLATE SPEED-UP V/V		2	
3-2	B.K.T SPEED-UP V/V		1	
3-3	BOLT HEX(10.9)		4	M16 x 35
3-4	WASHER DISH PLATE H/T		4	M16
3-5	BOLT HEX(10.9)		3	M16 x 140
3-6	WASHER LOCK-RIBBED		3	M16
3-7	NUT PREVAILING LOCK		3	M16
3-8	90° ELBOW (O-RING SEAL TYPE)		2	PF1" x PF1" 5#
3-9	O-RING (NOK)		2	1BP 29
3-10	HOSE ASSY(5#*905#)		2	1" x 4S x 330
3-11	90° ELBOW (S/W TYPE)		2	PF1" x PF1" 5#
3-12	CONNECTOR(LONG O-RING SEAL TYPE)		2	PF1" x PF1" 5#
3-13	O-RING(NOK)		2	1BP 29
3-14	90° ELBOW (O-RING SEAL TYPE)		2	PF1" x PF1" 5#
3-15	O-RING (NOK)		2	1BP 29
3-16	HOSE ASSY(5#*5#)		2	1" x 4S x 400
3-17	CONNECTOR(O-RING SEAL TYPE)		2	PF 1" x PF 1"5#
3-18	O-RING (NOK)		2	1BP 29
3-19	PLATE		2	
3-20	HOSE JOINT		2	
3-21	CLAMP		2	
3-22	BOLT SOCKET(12.9)		4	M12 x 30
3-23	WASHER SPRING H/T		4	M12
3-24	CONNECTOR(O-RING SEAL TYPE)		2	PF1" x UNF1-5/16"4#
3-25	O-RING(NOK)		2	1BP 29
3-26	UNION CAP		2	UNF1-5/16" 4#