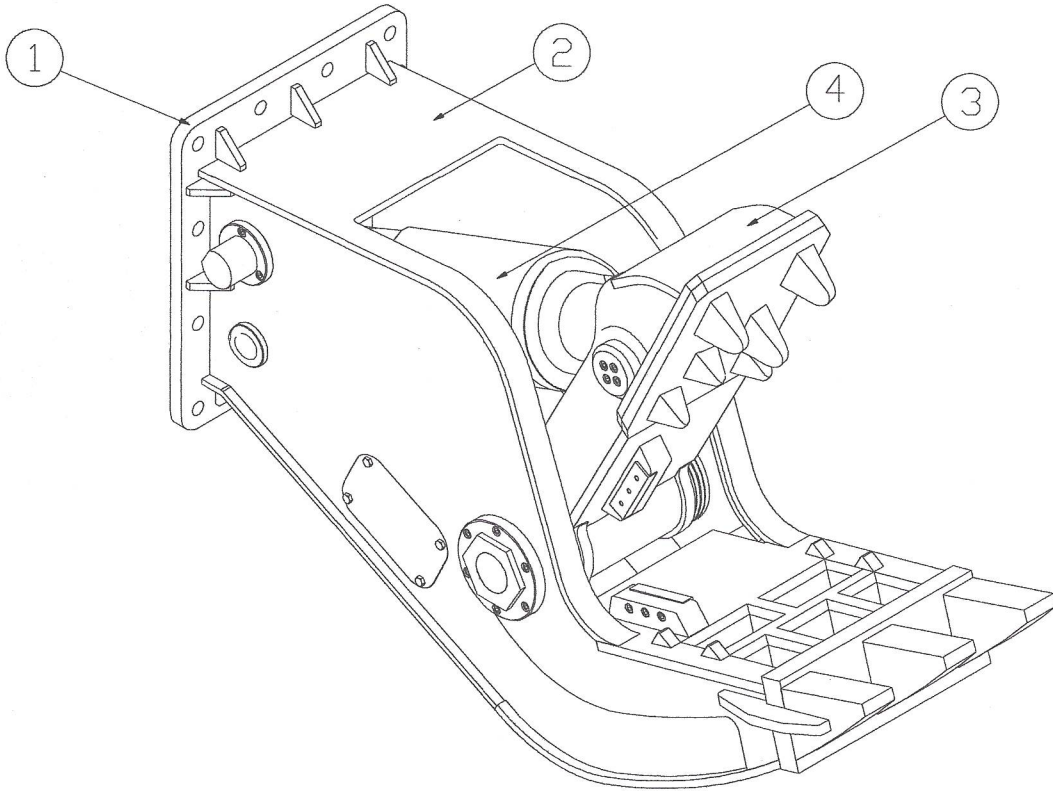


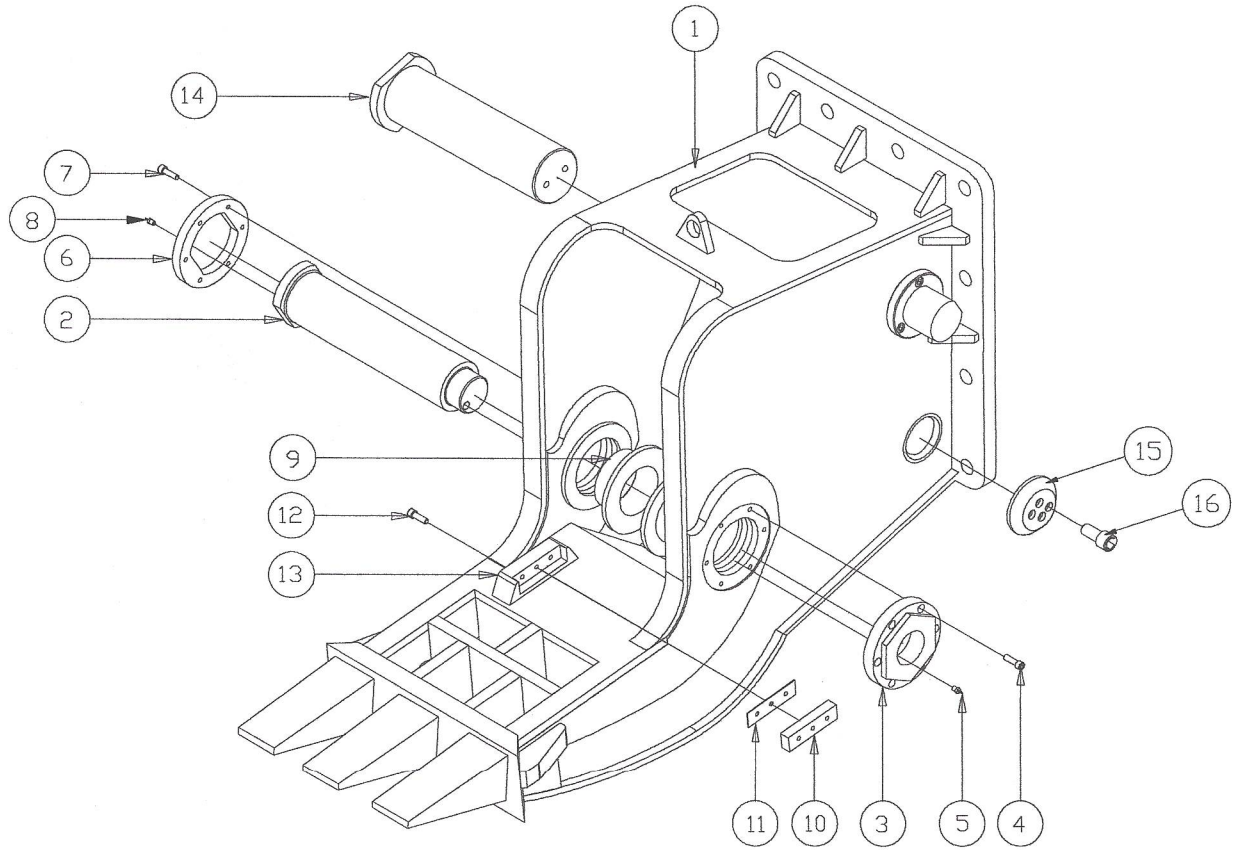
PART LIST

FOR UFC102R

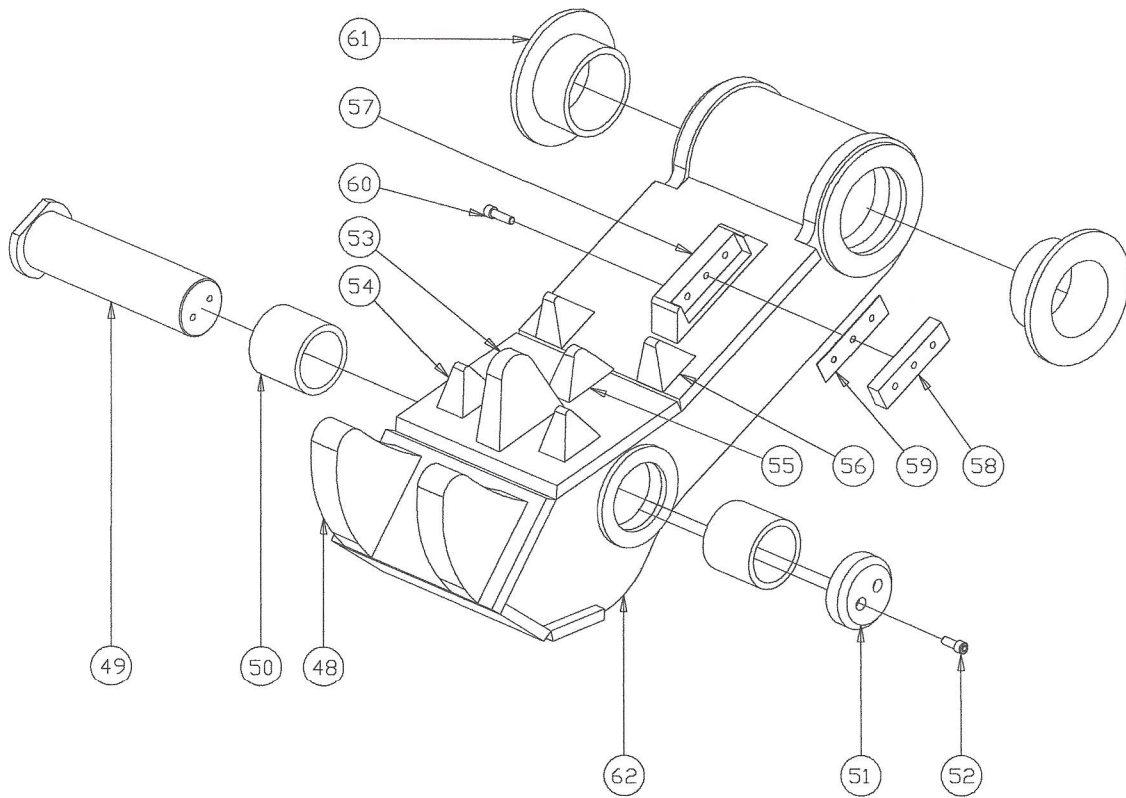


| PART LIST | | |
|-----------|---------------|-----|
| ITEM | PART NAME | QTY |
| 1 | UPPER BRACKET | 1 |
| 2 | MAIN BODY | 1 |
| 3 | ARM BODY | 1 |
| 4 | CYLINDER | 1 |
| | | |

UFC102R MAIN BODY ASSEMBLE



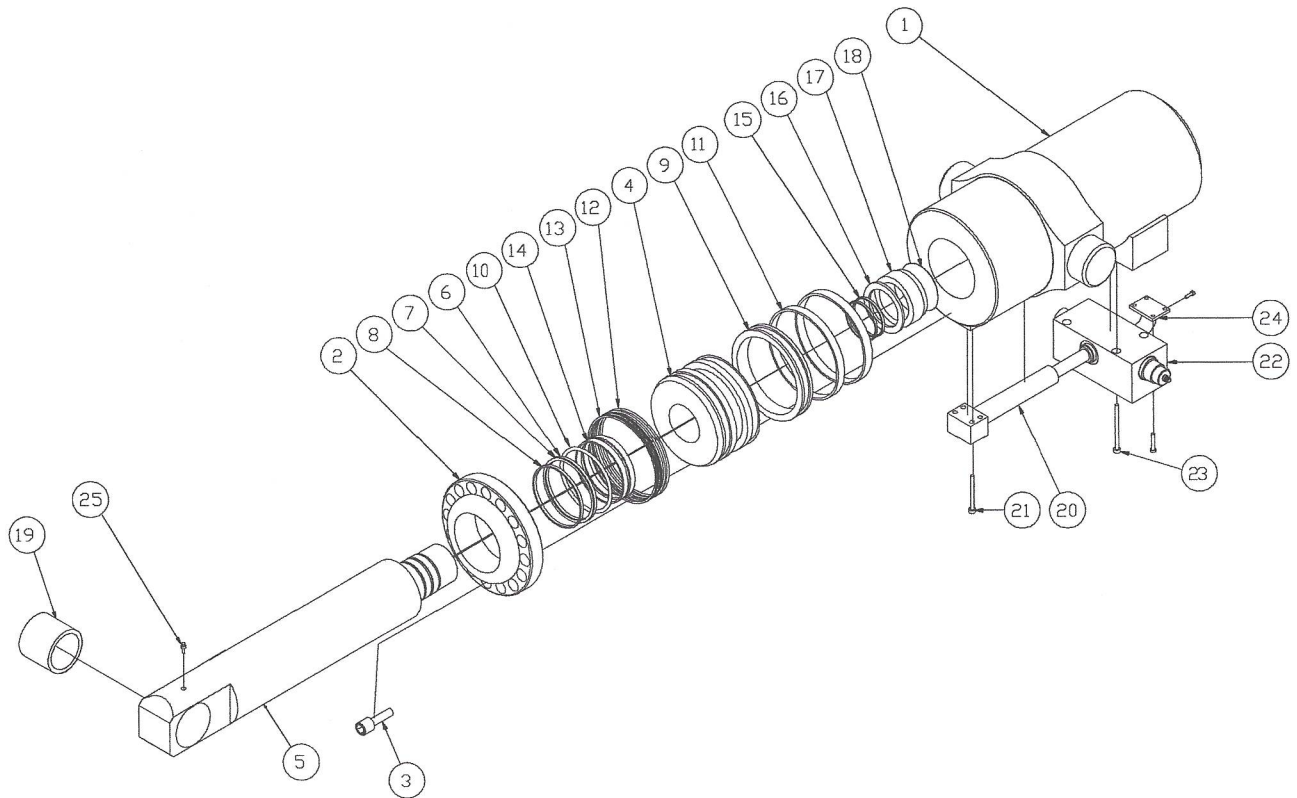
UFC102R ARM BODY ASSEMBLE



UFC102R ARM BODY

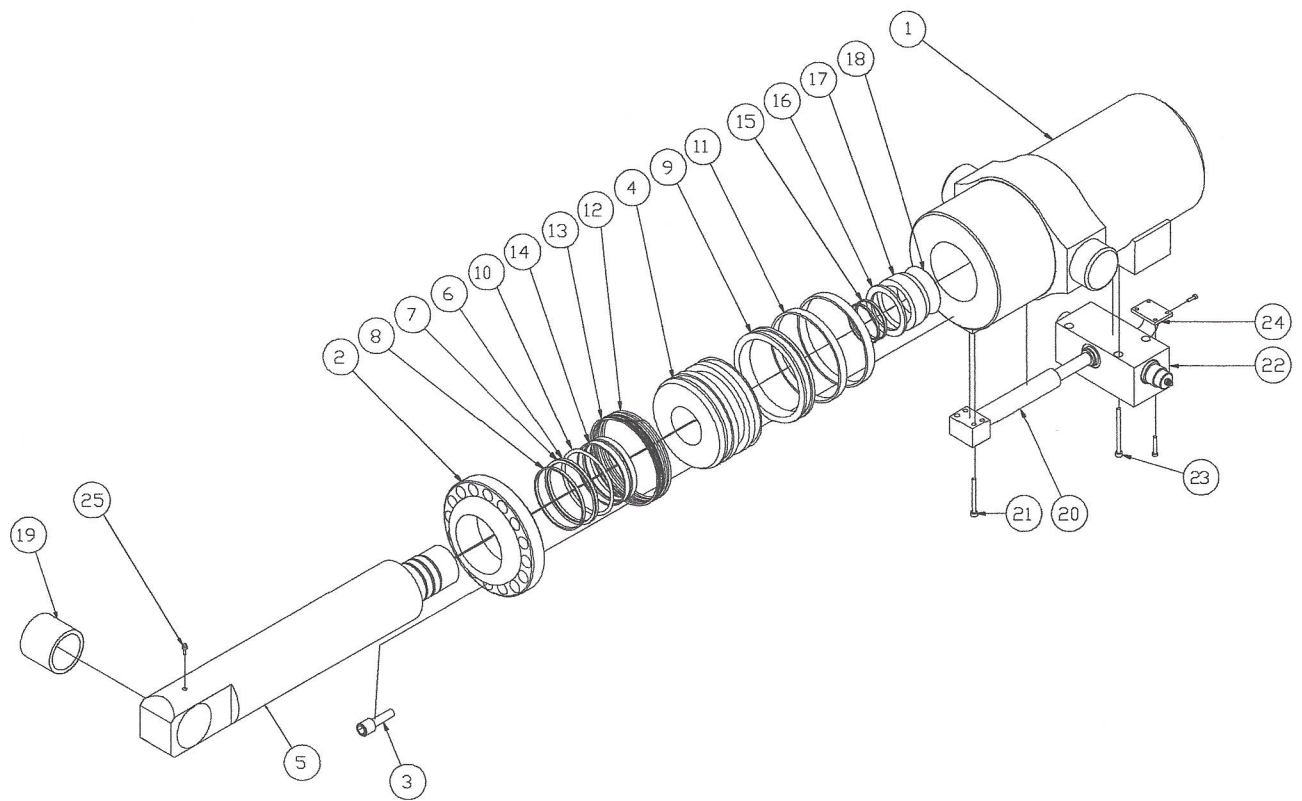
| PART LIST | | | | |
|-----------|---------------|-----------|-----------|-----|
| ITEM | PART NAME | PART NO | SPEC | QTY |
| 1 | ARM BODY | U102-A001 | | 1 |
| 2 | ARM MAIN BUSH | U102-A002 | | 2 |
| 3 | BLADE | U102-A003 | 140x35x25 | 1 |
| 4 | BLADE SHIM | U102-A004 | | 1 |
| 5 | BLADE HOUSING | U102-A005 | | 1 |
| 6 | " BOLT | U102-A006 | M10x35L | 3 |
| 7 | ARM PIN | U102-A007 | | 1 |
| 8 | ARM SIDE BUSH | U102-A008 | | 2 |
| 9 | ARM PIN CAP | U102-A009 | | 1 |
| 10 | " BOLT | U102-A010 | M10x30L | 2 |
| 11 | | | | |
| 12 | | | | |
| 13 | | | | |
| 14 | | | | |
| 15 | | | | |
| 16 | | | | |
| 17 | | | | |
| 18 | | | | |
| 19 | | | | |
| 20 | | | | |
| 21 | | | | |
| 22 | | | | |
| 23 | | | | |
| 24 | | | | |
| 25 | | | | |

CYLINDER ASSEMBLY

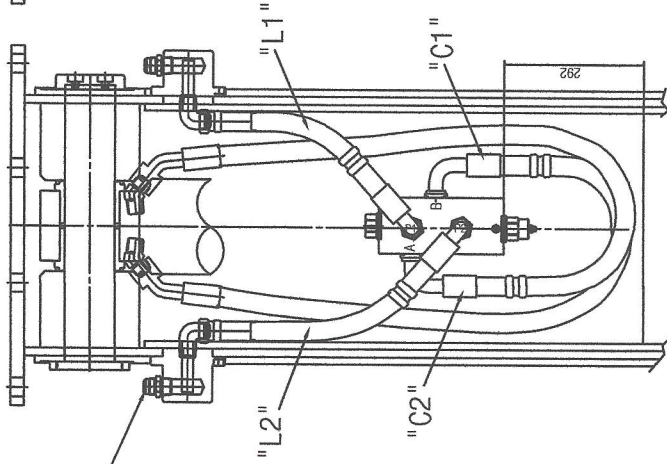
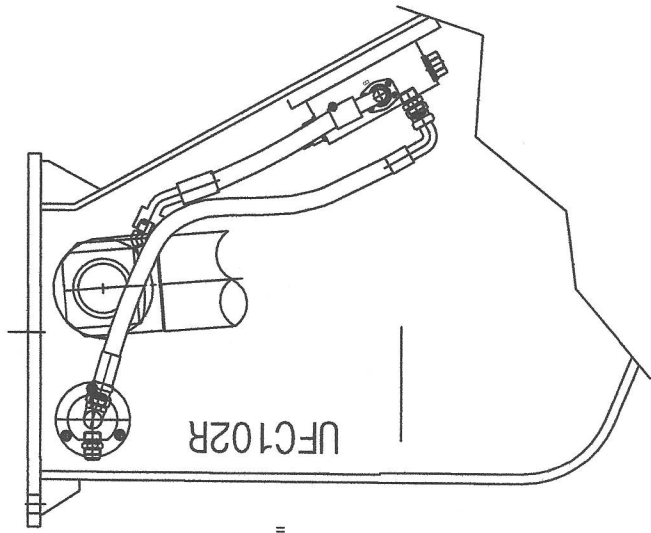


| PART LIST | | | | |
|-----------|-------------------------|-----------|------------------------|-----|
| ITEM | PART NAME | PART NO | SPEC | QTY |
| 1 | CYLINDER TUBE | U102-C001 | | 1 |
| 2 | CYLINDER CAP | U102-C002 | | 1 |
| 3 | CYLINDER CAP BOLT | U102-C003 | M18x50L | 15 |
| 4 | PISTON | U102-C004 | | 1 |
| 5 | ROD | U102-C005 | | 1 |
| 6 | ROD SEAL | U102-C006 | ISI125(125x140x12t) | 1 |
| 7 | ROD SEAL BACKUP RING | U102-C007 | 125x140x3t | 1 |
| 8 | DUST SEAL | U102-C008 | LBI 125(125x138x7x9.5) | 1 |
| 9 | PISTON SEAL | U102-C009 | SPG180(158x190x10.8) | 1 |
| 10 | ROD SEAL | U102-C010 | HBV(125x140.5x5.9) | 1 |
| 11 | PISTON WEAR RING | U102-C011 | 172x180x20 | 2 |
| 12 | CYLINDER CAP O-RING | U102-C012 | BG170(170x180x5.7) | 2 |
| 13 | CYLINDER CAP O-RING B/R | U102-C013 | 2t | 2 |
| 14 | ROD WEAR RING | U102-C014 | 125x132x20 | 2 |
| 15 | ROD O-RING | U102-C015 | BG80(80x85x3.1) | 1 |
| 16 | PISTON COLLAR | U102-C016 | | 1 |

CYLINDER ASSEMBLY

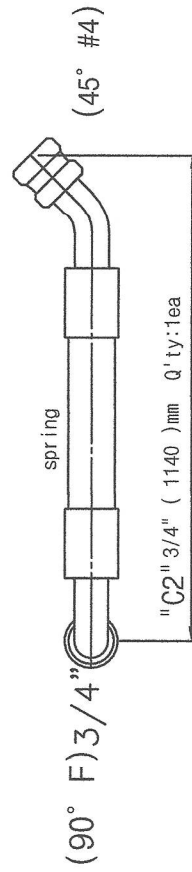
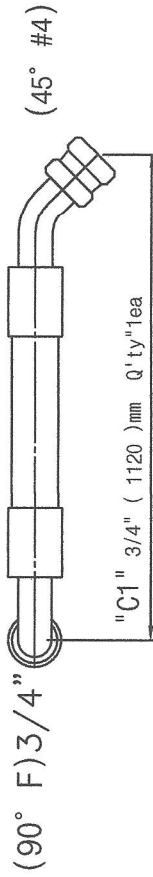
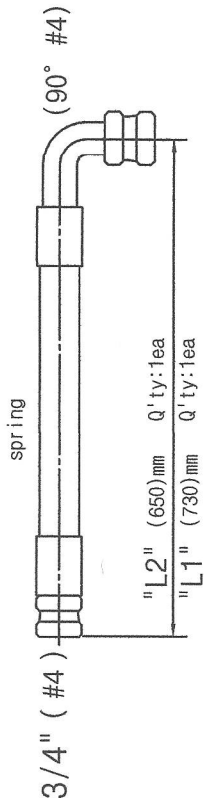
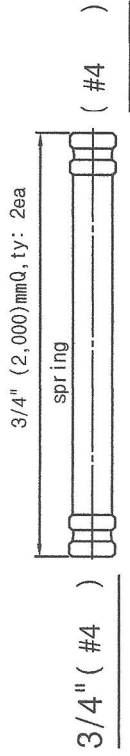


| PART LIST | | | | |
|-----------|----------------------|-----------|--------|-----|
| ITEM | PART NAME | PART NO | SPEC | QTY |
| 17 | PISTON NUT | U102-C017 | | 1 |
| 18 | LOCK KEY | U102-C018 | | 1 |
| 19 | ROD BUSHING | U102-C019 | | 1 |
| 20 | HYDRAULIC PIPE | U102-C020 | | 1 |
| 21 | " LOCK BOLT | U102-C021 | | 4 |
| 22 | SPEED UP VALVE | U102-C022 | | 1 |
| 23 | " LOCK BOLT | U102-C023 | | 3 |
| 24 | HYDRAULIC JOIN BLOCK | U102-C024 | | 1 |
| 25 | GREASE NIPPLE | U102-C025 | PT1/8" | 1 |
| 26 | | | | |
| 27 | | | | |

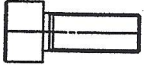
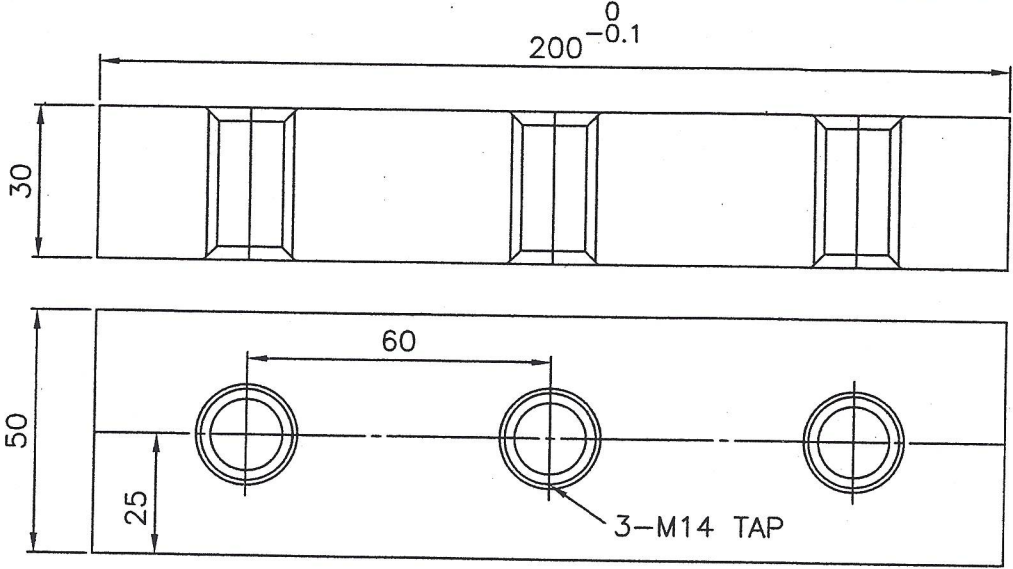
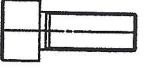
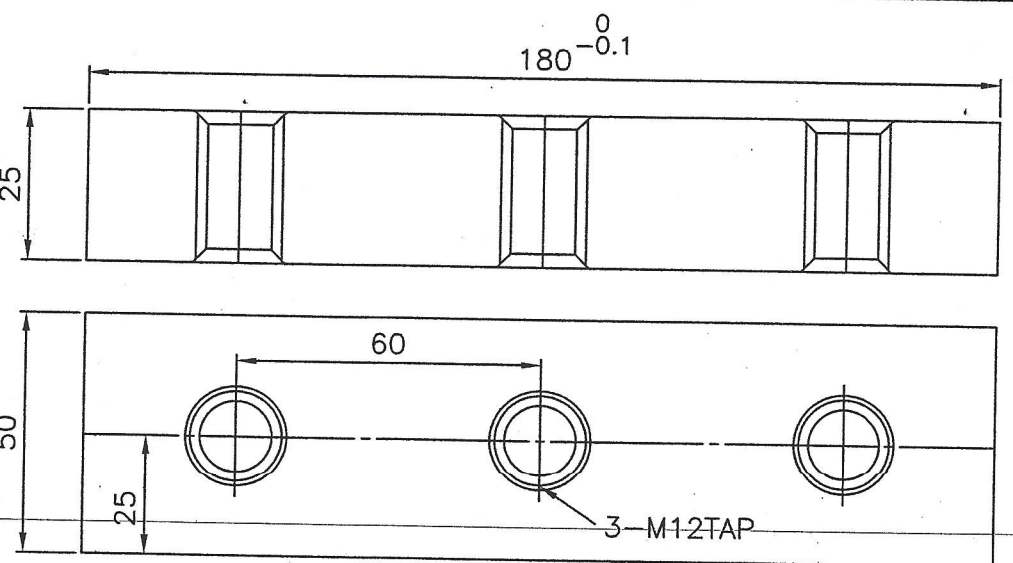
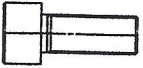
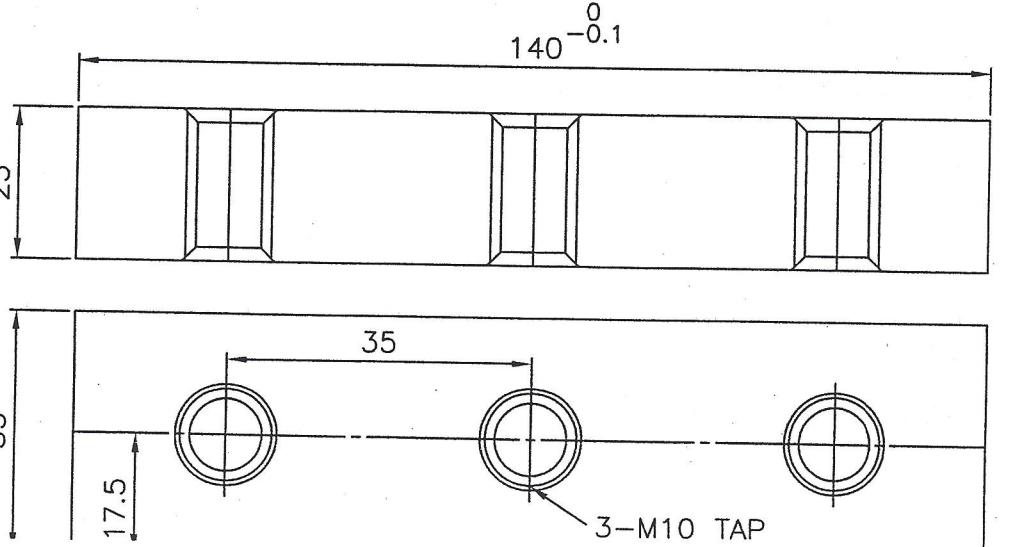


jaw opening(left)

(MAIN HOSE)



| NAME | MATERIAL | Q'T | REMARK |
|------|-------------|-----|-----------------------|
| 설계 | | | |
| 검토 | | | NEW model's hose line |
| 작성 | UFC102R | | |
| 제 | 설계일 | 입체명 | 월드중공업(주) |
| 도 | 2012년06월02일 | | |

| BOLT | BLADE |
|----------------------------------------------------------------------------------------------------------------------------------------------------------------------------------|------------------------------------------------------------------------------------------------------------------------------------------------------------------------------------------------------------------------------------------------------------------------------------------------------------------------------------------------------------------------------|
| <p data-bbox="118 421 352 483">UFC132R</p>  <p data-bbox="108 629 421 678">M14 x 50mm</p> |  <p data-bbox="1007 264 1123 327">200⁰_{-0.1}</p> <p data-bbox="480 427 512 472">30</p> <p data-bbox="480 674 512 719">50</p> <p data-bbox="600 741 632 786">25</p> <p data-bbox="855 584 887 629">60</p> <p data-bbox="1094 763 1262 808">3-M14 TAP</p> |
| <p data-bbox="108 1093 336 1155">UFC122R</p>  <p data-bbox="102 1272 413 1321">M12 x 40mm</p> |  <p data-bbox="999 875 1115 938">180⁰_{-0.1}</p> <p data-bbox="472 1032 504 1077">25</p> <p data-bbox="472 1279 504 1323">50</p> <p data-bbox="592 1346 624 1391">25</p> <p data-bbox="847 1189 879 1234">60</p> <p data-bbox="1086 1368 1238 1413">3-M12 TAP</p> |
| <p data-bbox="97 1653 325 1715">UFC102R</p>  <p data-bbox="94 1832 405 1881">M10 x 40mm</p> |  <p data-bbox="991 1473 1107 1536">140⁰_{-0.1}</p> <p data-bbox="464 1637 496 1682">25</p> <p data-bbox="464 1883 496 1928">35</p> <p data-bbox="576 1951 608 1995">17.5</p> <p data-bbox="839 1794 871 1839">35</p> <p data-bbox="1078 1973 1246 2018">3-M10 TAP</p> |